

# BAYON





# Introducing the BAYON.

BAYON's name was inspired by the capital of the French Basque Country, Bayonne, famous for its independent spirit and outstanding beauty.

## Contents.

Our brochure is interactive. Feel free to click through to the sections that interest you most or make the full journey with us from cover to cover.

Either way, explore and enjoy.



Page 3. Progress is our passion



Page 4. Ready for new heights



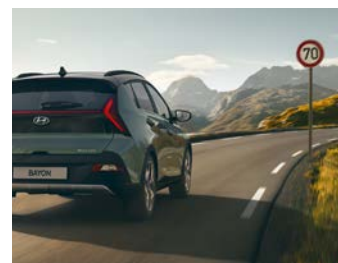
Page 6. Dynamic from every angle



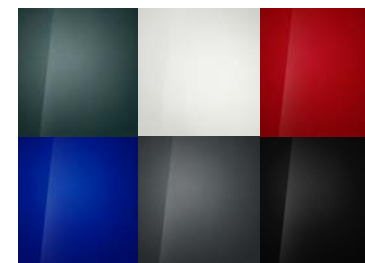
Page 9. Efficient performance



Page 11. Convenience & Technology



Page 16. Safety



Page 20. Model details, colours & trim



Page 27. Accessories



# We have a passion for **progress.**

The “can-do” spirit is at the heart of Hyundai’s heritage. It’s the attitude of progressing, no matter what. From humble beginnings, this vision has driven us to seek new challenges, encapsulated since our founding in the name ‘Hyundai’ – meaning ‘modern times’.

It’s the persistent curiosity for what lies ahead. Of always chasing the next. What was once a man’s desire for better is today the ethos of an entire company. As our founder said: “How does one know it’s impossible if one hasn’t tried it?”

Progress doesn’t happen by chance. We’re always pushing the borders of the possible, building tomorrow’s technology today, and powering the future with an ever-evolving range of zero-emission engines, seamless in-car connectivity and more.

We’ve come a long way. And we won’t stop here.

BAYON





Ready for  
new heights.

## See and be seen.

Designed to rise above the crowd, this compact and easy-to-handle crossover SUV is packed with smart safety technologies and advanced connectivity features. Adding to the appeal, BAYON delivers intelligent efficiency with a 48V mild hybrid system. Above all, you'll love the feeling of freedom and the all-round visibility you get from the higher seating position.





**Dynamic**  
from every angle.



## Unique and distinctive on the outside.

With its sharp lines and bold silhouette, BAYON epitomises contemporary style. Sleek and beautifully balanced, it elegantly combines Hyundai's award-winning SUV heritage with a stunning interpretation of our latest Sensuous Sportiness design language.



The distinctive headlamps and wide grille harmonise with the sleek air intake band and narrow LED daytime running lights to give the front a look of real purpose.

The signature arrow-shaped rear LED combination lamp lights<sup>1</sup> add to the personality and cleverly create an impression of extra width.

Striking from every angle, the profile is defined by its sporty wedge shape and the bold C-pillar which beckon you in for a closer look.

<sup>1</sup>Available on Premium and Ultimate trims.



## Stylish and roomy on the inside.

Delivering the comfort and space of an SUV in a compact body, BAYON gives you the best of both worlds. The higher seating position offers you enhanced visibility, and the family-friendly interior, with enhanced legroom and headroom, provides a real sense of spaciousness.

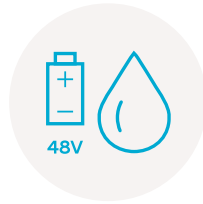


Model shown: BAYON Ultimate with black and grey interior.





**Efficient  
performance.**



# Going further with fuel-saving technology.

Without compromising on driving enjoyment, the T-GDi engine with 48V mild hybrid technology delivers excellent fuel efficiency and reduced CO<sub>2</sub> emissions.

The efficient 1.0-litre engine comes with a choice of either 100PS or 120PS power output and can be coupled with the 6-speed intelligent Manual Transmission (6iMT) or a 7-speed dual clutch transmission (7DCT). This advanced engine also features three drive modes to optimise the engine response and steering performance in different driving conditions. These are Eco, Normal and Sport.

The BAYON is the first Hyundai SUV to come equipped with rev matching, a feature usually reserved for Hyundai's high-performance models. Rev matching synchronises the engine to the output shaft, allowing for smoother or sportier downshifts and a better connection with the road ahead.

Better still, all these innovative technologies are covered by our warranty<sup>1</sup> that gives you five years of worry-free driving no matter how far you want to go in your BAYON.

<sup>1</sup>The Hyundai 5-Year Unlimited Mileage Warranty applies only to Hyundai vehicles that have been originally sold by an authorised Hyundai retailer to an end-customer, as set out in the terms and conditions of the warranty. Local terms and conditions apply.



A woman with long brown hair, wearing a light-colored jacket, is smiling and driving a car. The view is from the passenger side, looking into the driver's seat. The car's interior, including the steering wheel and dashboard, is visible. The lighting is warm, suggesting a sunset or sunrise.

**Driving enjoyment**  
fitted as standard.

# Next-level technology and convenience.

The BAYON offers you the latest technologies to enhance every minute at the wheel.





Enjoy state-of-the-art connectivity with the two big screens offering split-screen functionality. The 10.25" digital cluster and 10.25" centre touchscreen have been cleverly combined for a sophisticated look and enhanced usability.

With Apple CarPlay™ and Android Auto™ compatibility on board, you can connect your mobile and control your music, phone and app functions, all from the big screen.

If that sounds good, wait till you hear the Bose premium sound system featuring eight high-performance speakers including a subwoofer for an immersive experience and immaculate music reproduction.

Your relaxation is further enhanced by the ambient cabin lighting that offers a touch of style as well as added visibility when you need it.



10.25" supervision instrument cluster.



Wireless charging. Standard on Premium and Ultimate trims.



Bose premium audio system. Standard on Ultimate trim.



10.25" centre touchscreen. Standard on Premium and Ultimate trims.

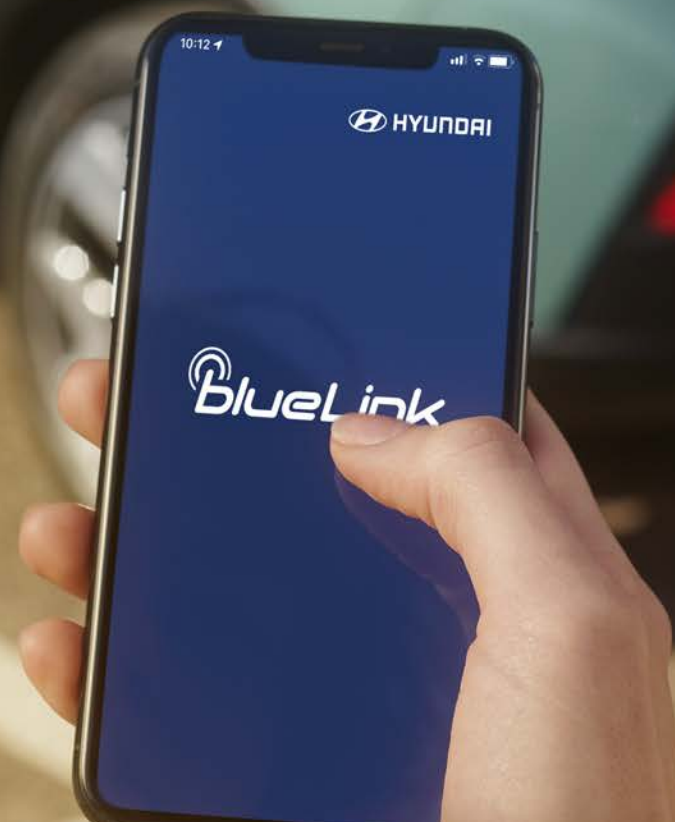


Interior Ambient lighting.



Smartphone connectivity.

**More  
features,  
more control.**

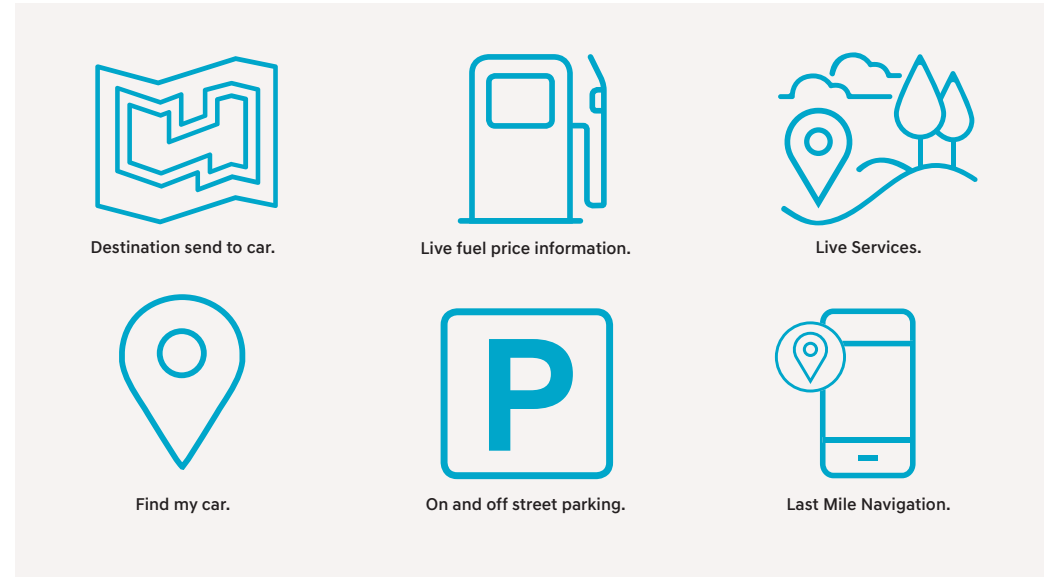




# With Bluelink® Connected Car Services, you're in control of your BAYON before you even leave the house.



Bluelink® available on Premium and Ultimate trims only.



## Before your journey.

With the Bluelink® app, the ease and joy of driving a Hyundai starts well before you're inside. The app communicates with your car, bringing you all the key data such as your fuel level. You can even plan your route in the comfort of your own home or office, then send it to the navigation system in your BAYON so it's ready and waiting for you.

## During your journey.

Hyundai Bluelink® Connected Car Services make driving easier and more enjoyable, without distracting you from the road. You can even control the navigation and entertainment with your voice, so your hands stay on the wheel. Get more reliable traffic and arrival time forecasting, as well as enhanced route calculations, with Connected Routing. Find filling stations, parking spaces and restaurants with Hyundai Live Services that comes free for five years as part of the navigation system.

## After your journey.

Your journey doesn't always end when you park. If you're in a busy city, for example, you may have to leave your car some way short of the destination. You can then use Last Mile Navigation to finish the journey on foot. If you think you might have forgotten to lock the car in the rush, you don't have to worry because your app can lock or unlock your Hyundai remotely. And, when you're returning to the BAYON after your appointment, Find My Car will guide you back to the exact spot.



# When it comes to safety, we have your back.

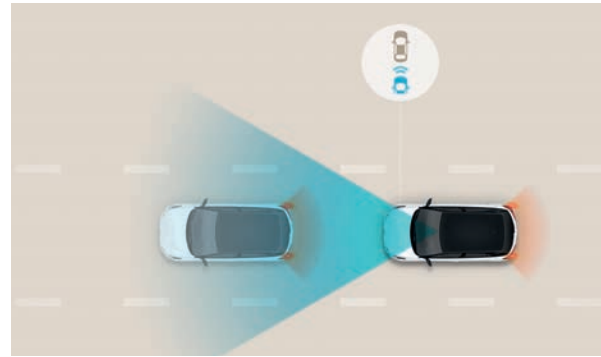
Hyundai's SmartSense advanced safety features give you all-round protection and the peace of mind to make every journey a pleasure.



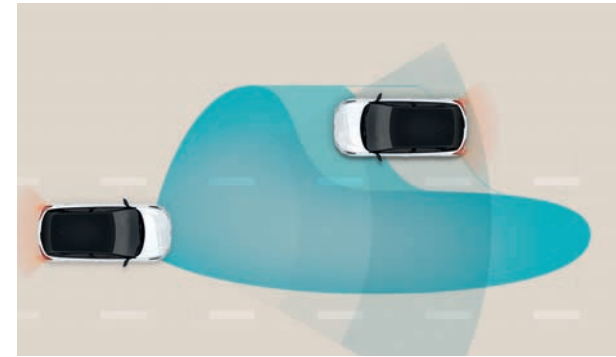
# Comprehensive driver assistance systems offer you more safety and more peace of mind.



**Driver Attention Warning (DAW):** When a pattern of fatigue or distraction is identified, the system gets your attention with an alert and pop-up message suggesting a break.



**Front Collision Avoidance (FCA):** The front view camera and radar sensors warn drivers of imminent collisions with vehicles and objects, applying the brakes when necessary to avoid collisions.



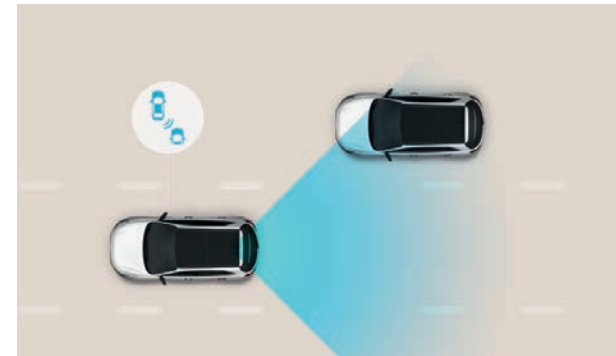
**High Beam Assist (HBA):** Less stress and maximum visibility. HBA not only detects oncoming vehicles but also vehicles in the same lane ahead and switches to low-beam as appropriate.



**Lane Follow Assist (LFA):** Smart sensors and the forward-facing camera detect when the car drifts from the centre of the lane, applying steering torque to maintain road positioning for safety. The car also estimates the trajectory of the vehicle ahead and adjusts its position accordingly. Available on Premium and Ultimate trims only.



**Lane Keeping Assist (LKA):** The Lane Keeping Assist (LKA) uses the front multi-function camera to monitor the lines of the road. In case of an unintended lane departure, it warns you and can apply counter steering torque to guide the car back to the lane.



**Blind Spot Collision Warning (BCW):** Radars detect traffic in the vehicle blind spot, warning drivers with an audible alarm when the indicator is used so you can be aware of the traffic around you even when you can't see it. Available on Premium and Ultimate trims only.





# Round the clock emergency assistance.

Your eCall button automatically alerts emergency services if you're in an accident and the airbags deploy. Or when you push it yourself. Emergency assistance is available 24 hours a day, 365 days a year.





# Safely does it.

The BAYON comes equipped with a rear view camera and rear parking sensors as standard, safety features that give you peace of mind each time you put your car in reverse and keep you and your passengers safe.



# Elevate your experience.

Create the car that matches your taste with a wide variety of exterior colours, as well as three trims.





Choose from our tempting range of exterior colours, each complementing the sculptured silhouette in its own distinctive way.



Mangrove Green Pearl (No cost option)



Atlas White Solid\*



Dragon Red Pearl\*



Intense Blue Pearl\*



Aurora Grey Pearl



Phantom Black Pearl\*

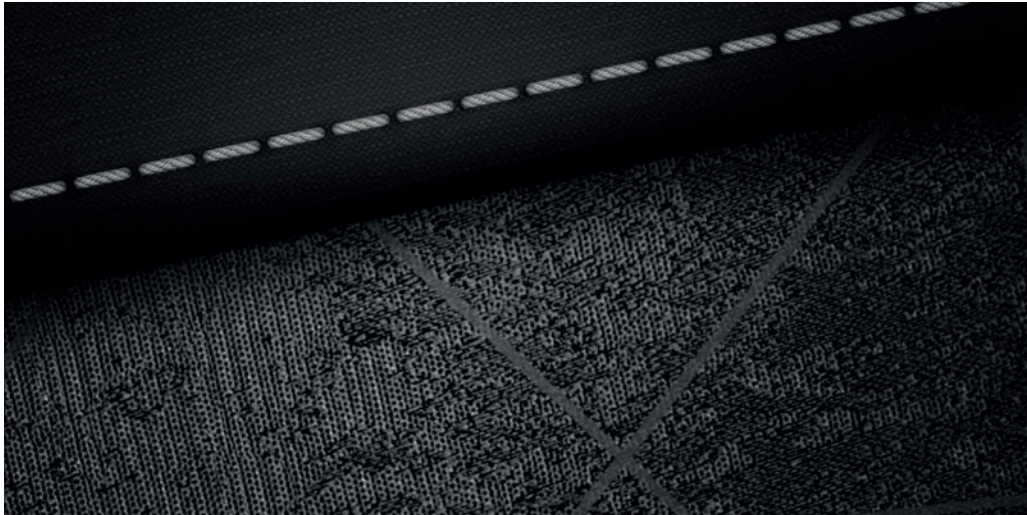
\*Ultimate trim comes with black two-tone roof and matching door mirrors on all colours except Aurora Grey. Ultimate cars in Aurora Grey have body coloured roof and door mirrors instead.



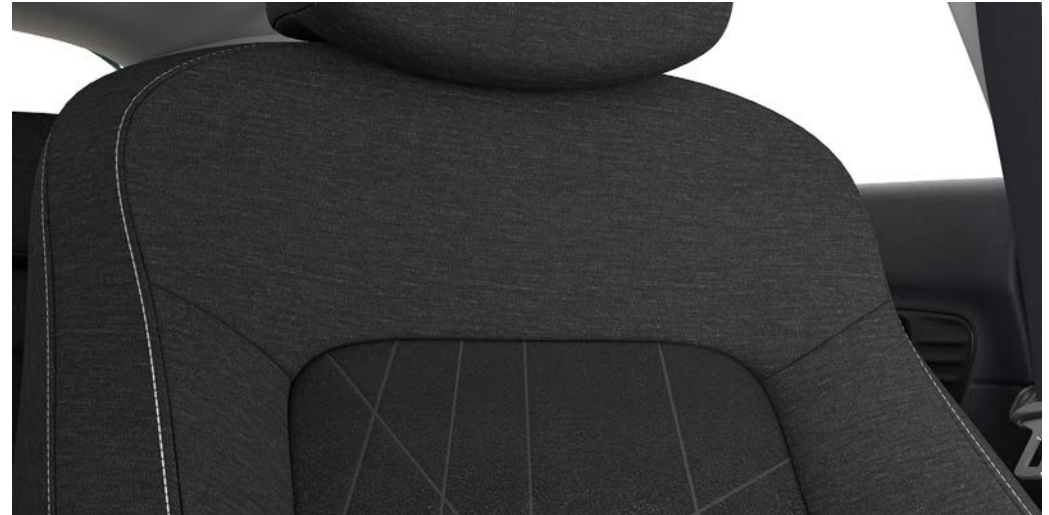
Surround yourself with  
**comfort & style.**



**A calm colour and trim concept with subtle accents creates a serene atmosphere which helps you relax and focus on your drive.**



Grey and black cloth seats. Standard on all trims.



Grey and black cloth seats. Standard on all trims.



Black dashboard. Standard on SE Connect and Premium trims.



Black and grey dashboard. Standard on Ultimate trim.



## BAYON SE Connect.

- 10.25" Digital Cluster
- 16" Alloy Wheels
- 8" Touchscreen Display with Smart Device Integration
- Air Conditioning
- Automatic Headlights with Dusk Sensor
- Autonomous Emergency Braking (AEB)
- Bluetooth® Connectivity with Voice Recognition
- Cruise Control with Speed Limiter
- Driver Attention Alert (DAA)
- Forward Collision Assist (FCA) with Pedestrian & Cyclist Detection
- High Beam Assist (HBA)
- ISOfix Anchorage Points – Rear
- Lane Keep Assist (LKA)
- Perimeter Alarm
- Rear Parking Sensors and Rear View Camera





## **BAYON Premium.**

**In addition to/replacement of SE Connect:**

- 10.25" Touchscreen Navigation with Bluelink®
- 17" Alloy Wheels
- Automatic Dimming Rear View Mirror
- Automatic Windscreen Wipers with Rain Sensor
- Chrome Finish Window Surround
- Climate Control with Automatic De-fog System
- Front Arm Rest with Storage
- Heated Front Seats
- Heated Steering Wheel
- LED (MFR) Headlamps
- Privacy Glass: Rear Side and Tailgate
- Rear Combination LED Lights
- Wireless Charging Pad



## **BAYON Ultimate.**

**In addition to/replacement of Premium:**

- Black and Grey Interior
- Blind Spot Collision Warning (BCW)
- Lane Follow Assist (LFA)
- Smart Key: Keyless Entry and Engine Start/Stop Button
- Speakers: BOSE Premium System with Subwoofer
- Two Tone Roof and Wing Mirrors: Black





Time to get  
**personal.**

Accessory shown: Racing Stripe Decals. Available in Sea Blue, Matte Black and Glossy White.

# Enhance the style and functionality of your BAYON with a range of accessories for the inside and out.



Floor Mats (1. Velour / 2. All-weather).



Bike Carrier.



Entry Guard.



Towbar.



Boot Liner.



Rear Bumper Protector.



Dog Guard.



Sport Stripe Decals. Available in Sea Blue, Matte Black and Glossy White.





Specifications shown in this brochure are based upon European left hand drive models and the latest available information at the time of formatting. The colours reproduced in this brochure are subject to the variations of screen settings and may vary from the actual colour and paint finish. Colour options in this brochure are subject to availability. Any references to achievable mileage range are based on WLTP test data. Real life results may vary based on factors including the accessories fitted (post-registration), variations in weather, driving styles and vehicle load.

In line with our policy of continual product improvement Hyundai Motor UK Ltd reserves the right to make changes at any time, without notice, to prices, colours, material, design, shape, specifications and models, and to discontinue items.

**For the latest details, or to find out more about the BAYON please contact your local retailer.**

**Your local Hyundai retailer:**  
**[www.hyundai.co.uk/retailer-locator](http://www.hyundai.co.uk/retailer-locator)**  
**Customer enquiries: 0800 981 981**



Hyundai Motor UK Ltd  
Ground Floor, Birchwood Building  
Springfield Drive  
Leatherhead KT22 7LP  
T: 0800 981 981  
[www.hyundai.co.uk](http://www.hyundai.co.uk)

03/2023