



# SANTA FE Plug-in Hybrid.



## Hyundai Business Powering Progress - shaping the future of fleet mobility

Hyundai continues to lead the way, offering fleet operators advanced solutions that balance practicality, cutting-edge technology, and improved sustainability. With one of the most diverse line-ups of electrified vehicles, the modern Hyundai range offers company car drivers several award-winning electric and plug-in hybrid models, all benefiting from low BIK.

### The award-winning Hyundai SANTA FE Plug-in Hybrid

Strengthening the electrification of our award-winning SUV range, the Hyundai SANTA FE Plug-in Hybrid has been recognised as the WhatCar? Hybrid Car of the Year 2024/2025 and Carwow Car of the Year 2025. With versatile seating for 6 or 7 passengers, it provides plenty of room for everything you need. The 4-wheel drive Plug-in Hybrid offers an electric range of up to 33 miles<sup>†</sup>, qualifies for a BiK rate of 13%\* and has CO<sub>2</sub> emissions of just 38g/km (WLTP combined). As with all our fleet vehicles, the SANTA FE – also available in hybrid and mild-hybrid powertrains – comes equipped with our most advanced safety and infotainment technology.

Unlimited peace of mind comes as standard with your Hyundai. We include five-year unlimited mileage warranty and 8 year/100,000 mile battery warranty.

**5** YEAR  
Unlimited  
Mileage Warranty

**8** YEAR  
100,000 Mile  
Battery Warranty



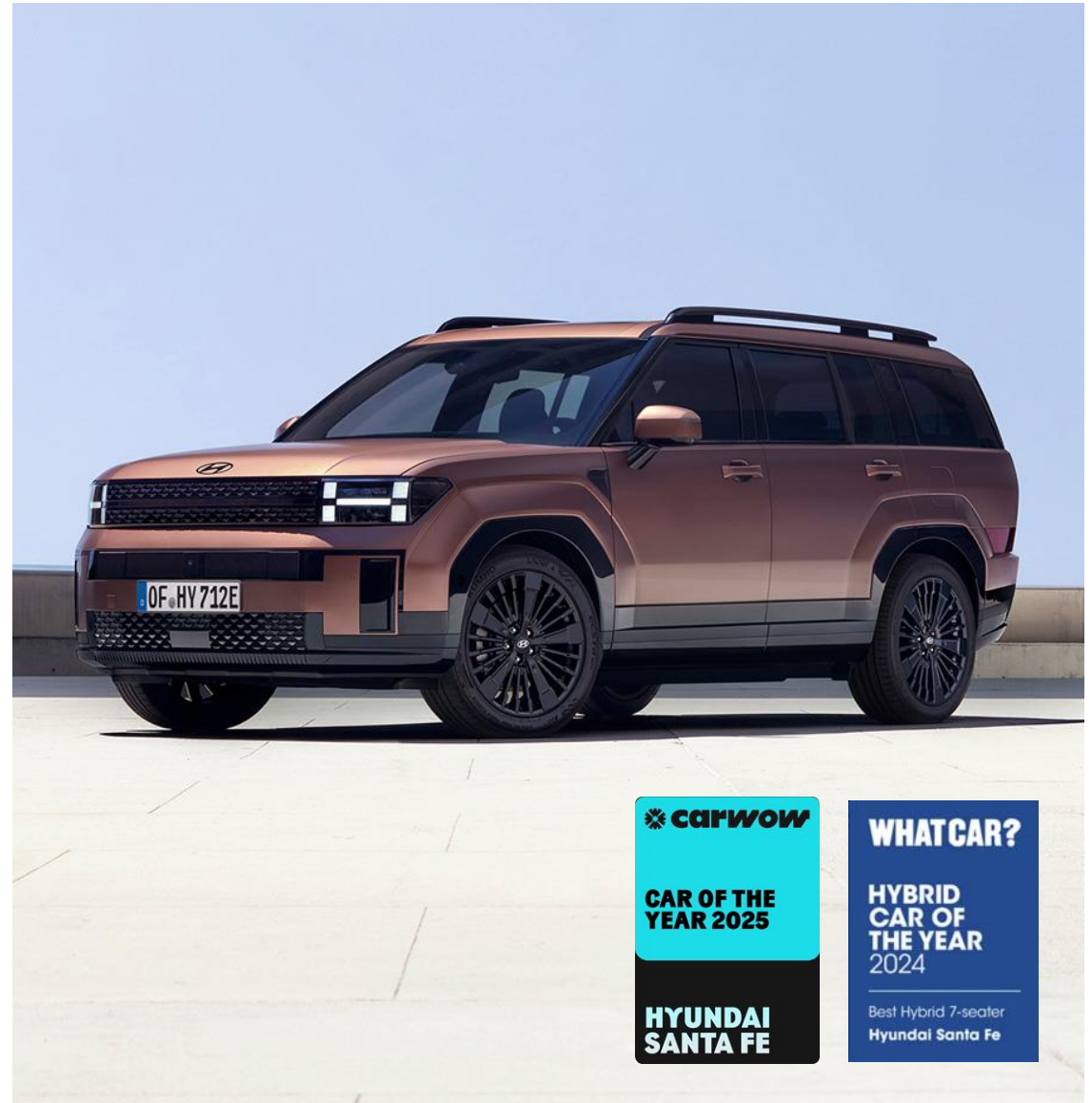
At Hyundai Business, no matter the size of your fleet we have experts on hand to help you find the right mix of vehicles to suit your operational requirements. Speak to one of our Fleet Account Managers today.



[Request a call back](#)



[Tech, Spec & Pricing](#)



# SANTA FE

## Plug-in Hybrid

Our largest SUV, the Plug-in Hybrid variant offers all the benefits of a spacious, 7-seat luxury car along with impressive economy, low emissions and a pure electric range of up to 33 miles<sup>†</sup>.



7 seats (leather as standard)  
with one touch  
access to 3<sup>rd</sup> row



Up to 33 mile<sup>†</sup>  
electric driving  
range (WLTP)



HTRAC  
four-wheel-drive  
system



12.3" Touchscreen NAV (Incl.  
LIVE Services), Bluelink® &  
Wireless Apple Carplay®  
/Android Auto™



Bluelink connected car  
services for remote  
smartphone control

P11D  
£52,530

CO<sub>2</sub>  
38g/km



MPG  
166  
(WLTP Combined)

BiK  
13%\*

Information based on Premium 1.6T 253PS Plug-in Hybrid 4WD

\* For 2025/2026 tax year.

<sup>†</sup> Maximum range 33 miles for the 1.6T 253PS Plug-in Hybrid 4WD according to WLTP cycle. Specification dependent. Actual range will vary depending on factors including road conditions, outdoor temperature, driving style, use of climate control and battery condition.



At Hyundai Business, no matter the size of your fleet we have experts on hand to help you find the right mix of vehicles to suit your operational requirements. Speak to one of our Fleet Account Managers today.



[Request a call back](#)



[Tech, Spec & Pricing](#)



## Hyundai SANTA FE Plug-in Hybrid

Whether you choose Premium, Ultimate or the Calligraphy Edition you'll benefit from the latest tech and generous equipment as standard.



### Premium Key Highlights:

- 20" Silver Alloy Wheels
- 12.3" Touchscreen NAV (Incl. LIVE Services), Bluelink® & Wireless Apple Carplay®/Android Auto™
- Driver's Supervision Instrument Cluster with 12.3" LCD Display
- Leather Interior
- Smart Electric Tailgate - Hand's Free Opening Function
- Smart Key - Keyless Entry with Start/Stop Button
- Rear Seats (Third Row) - Split Folding (50/50)
- Interior Ambient LED Lighting - Multi-Colour



Example Car Hyundai SANTA FE Premium 1.6T 253PS Plug-in Hybrid 4WD Automatic

**5** YEAR  
Unlimited  
Mileage Warranty

**8** YEAR  
100,000 Mile  
Battery Warranty

### Ultimate Key Highlights:

- Bose Premium Sound System
- Head-Up Display (HUD)
- Surround View Monitor (SVM)
- Digital Centre Mirror (DCM)
- Forward Collision Avoidance Assist 2 (FCA 2)
- Highway Drive Assist 2 (HDA 2)

### Calligraphy Key Highlights:

- Nappa Leather Interior
- UV-C Compartment
- Premium Relaxation Seat - Front Seats
- 20" Black Alloy Wheels
- Black Finish Styling: Skid Plate, Fender Upper Garnish, Door Side Garnish, C/D Pillars, Rear Bumper Moulding & DLO
- Rear Seats (Second Row) - Split Folding (60/40), Sliding and Reclining (7-Seater Only)



At Hyundai Business, no matter the size of your fleet we have experts on hand to help you find the right mix of vehicles to suit your operational requirements. Speak to one of our Fleet Account Managers today.



[Request a call back](#)



[Tech, Spec & Pricing](#)



## Fleet expertise on hand

If you're considering a new fleet partner, Hyundai Business should be top of your shortlist. We want to make things as easy as possible to help you find the right cars for your business.

Whether you're looking for a practical Plug-in Hybrid SUV or a striking electric saloon, with our range of innovative, high-quality cars, you and your company car drivers will enjoy low running costs, efficiency, the latest technology and stylish design.

At Hyundai Business, we have experts on hand to help no matter the size of your fleet - whether it's finding the right mix of vehicles for your operational needs, access to competitive funding options or navigating the journey of transitioning your fleet to EV.

Schedule a call with one of our Fleet Account Managers today.



[Request a call back](#)