

# SANTA FE

## PLUG-IN HYBRID





# Make the most of your next adventure.

The 5th generation SANTA FE is designed from the ground up with an extended wheelbase and a radically new design featuring a boxy, distinctive silhouette. Bigger boot area helps maximise rear cargo capacity and better accommodate outdoor and urban activities.







# For city life and the great outdoors.

From city streets to country roads, the SANTA FE delivers the capability to experience the world on your own terms. Experience the latest smart tech and impressive performance to help you live life to the fullest – no matter where the journey takes you.

Experience the smooth power delivery and exceptional fuel economy of our hybrid (HEV) or plugin hybrid (PHEV) drivetrains. Our innovative all-wheel-drive system has been engineered to handle even the most challenging weather conditions, so you can conquer any adventure with confidence.







# Give your life more space.

Designed for daily adventure, the SANTA FE gives you plenty of room for everything your busy life can throw at it. From outdoor gear and bulky boxes to kid's stuff and oversized shopping sprees – this dynamic SUV finds the perfect balance between city life and the great outdoors. Offering generous living space for your active lifestyle, it delivers refined comfort for up to 7 adults.

Unwind in first-class comfort with the SANTA FE's versatile seating for 6 or 7 passengers. Sink into the fully reclinable front relaxation seats of the 7-seater. This indulgent comfort extends to the second-row captain's chairs in the 6-seater. Even third-row passengers enjoy adjustable seatbacks for a relaxing ride, whilst all 3 rows get USB C ports and cupholders for maximum comfort and practicality.





# Feature highlights.

Designed to put you in charge and keep you connected, the SANTA FE is equipped with an abundance of smart tech that makes driving safer and more relaxed – like a head-up display, convenient shift-by-wire gear shift controls and a wireless charging tray located conveniently in the centre console.



## Infotainment system

The next-generation infotainment system offers a more luxurious, connected, and refined user interface. With wireless Apple CarPlay and Android Auto, you can seamlessly mirror your phone onto the large 12.3" display.



## Digital Center Mirror (DCM)

DCM projects the rear view onto the mirror in real-time through a camera sensor mounted on the rear spoiler, providing an optimal rear view in all driving situations.



## Surround View Monitor (SVM)

The surround view monitor uses synthesised images from 4 wideview cameras to display a changeable 360° 3D view while driving and parking.



## Digital Key

Use your smartphone or digital watch to lock/unlock your car, start the engine and even share your digital key with friends and family.



# Feature highlights.



## Dual Wireless Phone Charger

The SANTA FE gets dual wireless phone charging with a built in fan to ensure your fully charged phone feels cool to the touch.



## Head's up Display (HUD)

Keep your eyes on the road with a head's up display that shows your speed, traffic signs and other vital information.



## Optional Captain Chair 6-Seater

Enjoy a first-class family experience with our 6-seat configuration, featuring dedicated second row captain's chairs with extra legroom.



## UV Sterilisation Tray

The ultraviolet (UV-C) sterilisation tray allows you to store sanitary items such as face masks hygienically. You can also sanitise small items such as phones, gloves and keys with a touch of a button.





[Discover more](#)

Car shown not to UK spec.

# BlueLink

## Connected Car Services.

Experience seamless connectivity with BlueLink®, which turns your compatible smartphone into a digital hub for your car. For a decade, you'll enjoy core features free of charge, including Hyundai Digital Key 2<sup>†</sup> to lock, start, and securely share your car, smarter navigation with live traffic and EV routing, and automatic Over-the-Air updates<sup>‡</sup>. For the first three years\*\*, your experience is further enhanced by BlueLink® Plus, unlocking a full suite of Live Services for real-time charging and parking information, as well as powerful Remote Controls to pre-condition the cabin, manage charging, and more, all from your phone<sup>^</sup>.





# Interior Colours.

Featuring new colours and materials, the SANTA FE is available with the following interior colour schemes:



**Obsidian Black**  
Premium | Ultimate - Leather



**Supersonic Grey**  
Ultimate - Leather



**Pecan Brown**  
Ultimate - Leather | Calligraphy - Nappa Leather



**Forest Green**  
Ultimate - Leather | Calligraphy - Nappa Leather



**Black Ink**  
Calligraphy - Nappa Leather







# Loading your gear made easy.

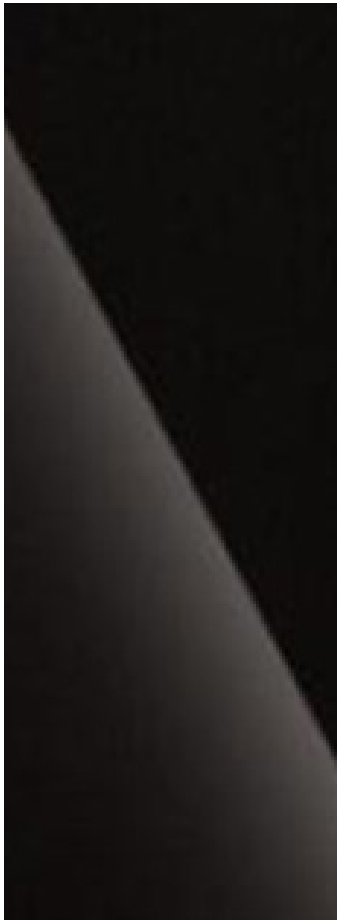
Enjoy easy loading for adventurers and their gear. You can set the opening speed and lift height of the tailgate to suit your personal preference. Kick back and relax. SANTA FE gives you generous living space for festivals, picnics or camping. Fold down the rear seats and enjoy a best-in-class terrace-like space that's great for city life – and even better for the great outdoors.





# SANTA FE Colours.

Choose from a wide range of exterior colours to create a SANTA FE that is best matched to your personal style.



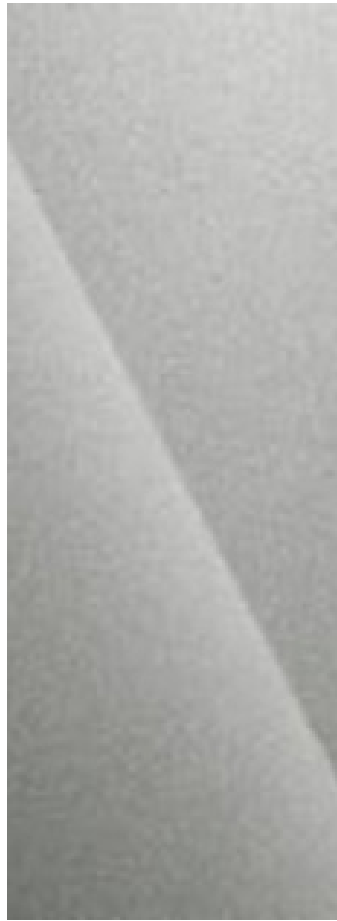
Abyss Black  
(Pearl)\*



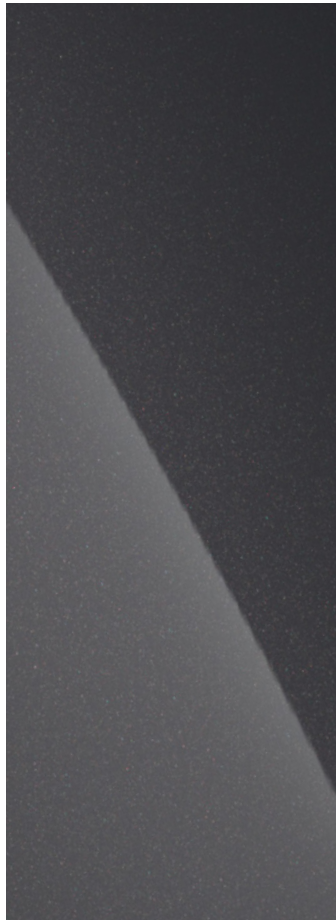
Creamy White  
(Pearl)\*



Creamy White  
(Matte)\*



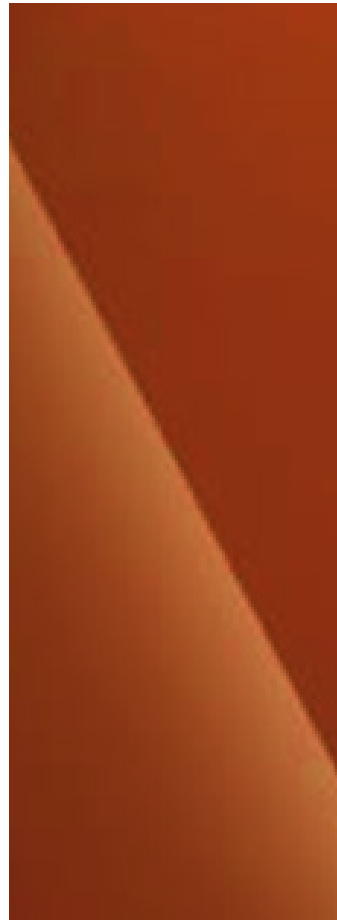
Typhoon Silver  
(Metallic)\*



Ecotronic Grey  
(Pearl)\*



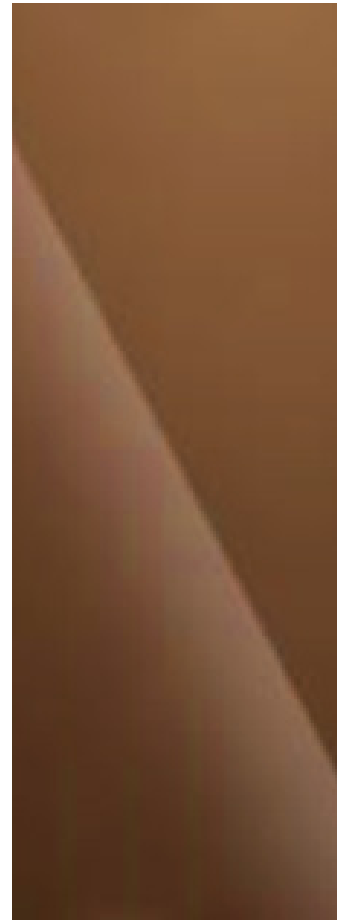
Olive Green  
(Pearl)\*



Terracotta Orange  
(Solid)\*



Cyber Sage  
(Pearl)\*



Earthy Brass Metallic  
(Matte)\*



Pebble Blue  
(Pearl)\*

\* All colours are an additional cost option except from Terracotta Orange (Solid)\*.



Silver 20" Alloy Wheel  
(Premium and Ultimate Only)



Black 20" Alloy Wheel  
(Calligraphy Only)



<sup>†</sup> The Hyundai Digital Key 2 feature requires a compatible mobile device, Bluelink<sup>®</sup> app installation and an active Bluelink<sup>®</sup> subscription with an eligible subscription plan. Features, app and specifications are subject to change. Smartphone and screen on this page are shown for illustration purposes only. For more details, see the Owner's Manual and the Bluelink<sup>®</sup> terms of use. Here are links to find more information on your phone's compatibility: Apple Google Samsung Convenience aid only. Not intended as a permanent key replacement.

<sup>‡</sup> With an eligible subscription plan of an active Bluelink<sup>®</sup> subscription and 4G signal required.

<sup>\*\*</sup> Sante Fe comes with 6 months complimentary Bluelink<sup>®</sup> PRO connectivity and three years of Bluelink<sup>®</sup> PLUS and ten years Bluelink LITE, our base tier for Bluelink<sup>®</sup> connectivity. You can purchase Bluelink<sup>®</sup> PRO in the Bluelink<sup>®</sup> Store.

<sup>Δ</sup> Requires compatible smartphone, Bluelink App and active subscription with an eligible subscription plan.

The Hyundai 5-Year Unlimited Mileage Warranty applies only to Hyundai vehicles that have been originally sold by an authorised Hyundai retailer to an end-customer, as set out in the terms and conditions of the warranty booklet. 8 years or 100,000 miles warranty on vehicle battery unit. Local terms and conditions apply. Contact your official Hyundai dealer for further information.

All the information contained in this brochure is provisional and subject to change without notice and is intended only as preliminary notification. Possible variations in the representation of vehicle colours are due to the limitations of printing technology. The products shown correspond to the offer and the range of equipment for European markets. The vehicles shown in this brochure may be equipped with additional equipment at extra cost, and not all model versions are included in this brochure. Hyundai Motor Europe reserves the right to make changes to technical specifications and equipment content without notice. Please consult your Hyundai retailer for exact details.

Details within this brochure are subject to change.

Hyundai Motor UK Ltd Ground  
Floor, Birchwood Building  
Springfield Drive Leatherhead  
KT22 7LP  
T: 0800 981 981  
[www.hyundai.co.uk](http://www.hyundai.co.uk)

01/2026

