

KONA





Live unlimited.

With its futuristic new look, a more dynamic road presence and a larger living space for all your adventures - this bold, upscaled SUV offers you cutting-edge smart tech coupled with the widest range of powertrains in the segment. Find the perfect KONA to fit your life.





A sharper and bolder new look.

The KONA's sleek exterior design started with an EV-first approach, but despite its futuristic appearance, this Hyundai never lets anyone forget that it's an SUV. The pure, distinctive front end is highlighted by a Seamless Horizon Lamp, arching elegantly across the entire bonnet for a more dynamic road presence. Together with the full projection LED headlamps integrated in the front bumper, the distinctive twin headlamp design creates a truly eye-catching lighting signature.





Sculpted lines and stylish edge.

Its sporty character is embodied by the rugged wheel arch cladding, building on the iconic design identity of the first KONA. And mirroring the front for a harmonious overall look, the rear Seamless Horizon Lamp rounds out a unique LED lighting signature that really sets the KONA apart from the crowd. On the side, sharp diagonal parametric surfaces harmonise with the satin chrome moulding that slices through the belt line to sporty rear spoiler - creating a contour that wraps around the entire vehicle.





Discover unlimited sportiness.

You're used to making a statement. Now you can drive one. Upgraded with a wide range of motorsport-inspired design features, the KONA N Line exudes exhilarating performance flair. It features more aggressive front and rear design elements with wing-shaped bumpers, body-coloured wheel arch cladding and twin chrome exhaust pipes. The sporty silhouette is emphasised by an exclusive silver side skirt in silver that flows from the silver accent line of the front lower bumper. Exclusive 18" N Line alloy wheels and N Line badges on the front, rear and sides underscore the model's bold appearance.





The sportier side of SUV style.



Get into a whole new level of sportiness. The interior features sporty metal pedals, an N Line steering wheel and shift lever as well as red accents throughout. The sporty N Line seats feature red contrast stitching, which can also be found on the door trim and armrest. Choose from cloth seats or a Alcantara & Leather version featuring the luxurious grip and feel of Eco Alcantara® with 65% recycled PET.

So much more than just a pretty face.



A powerful first impression.

You can feel the performance-inspired roots of the KONA N Line in every detail. The exclusive front bumper design with its dedicated mesh and muscular black accents features an integrated N-Line logo for a powerful first impression.



Muscular rear bumper.

The body-coloured wheel arch cladding flows elegantly into the muscular rear bumper. It features a silver frame enhanced with dedicated KONA N-Line mesh. The twin chrome exhaust pipes highlight the sporty look of this trim.



Maximised living space.

Elegant and roomy, the KONA has evolved, growing wider and longer to provide maximised living space. The rear Curveless Bench Seat provides generous leg and shoulder room in the 2nd row and visually expands the refined interior. A high-tech experience through and through, the crown jewel of the cockpit is the elegantly curved panoramic display. It features two integrated screens for intuitive usage and advanced connectivity: a 12.3" infotainment touch screen and 12.3" digital cluster. Ambient lighting offers 64 configurable colours to fit every situation, so you can create the perfect atmosphere to suit your mood.



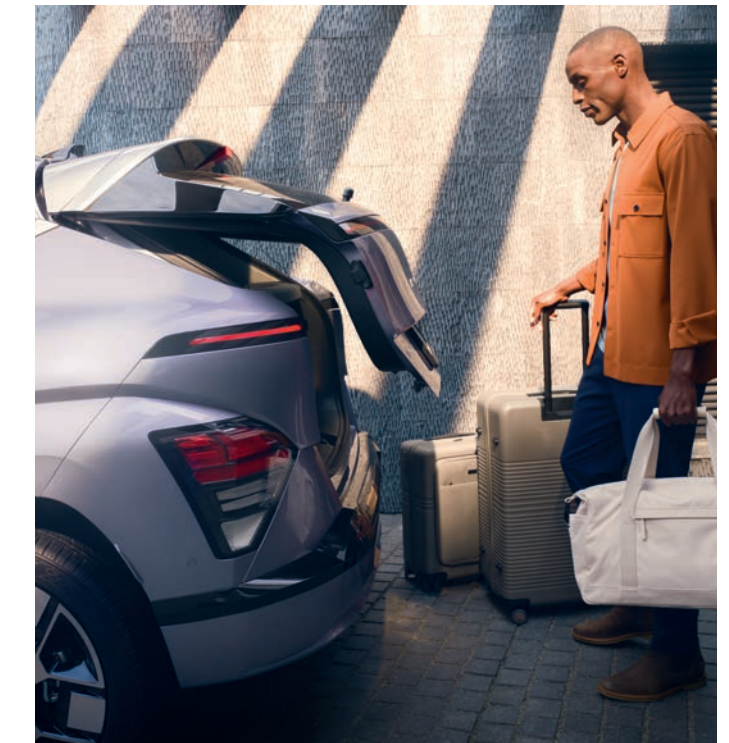


Enjoy plenty of roominess and versatility.

Designed to fit everything you and your busy life can throw at it, the KONA offers plenty of room for passengers and cargo. This bold, upscaled SUV now gives you a larger living space for all your adventures. The generous trunk space of 466 litres (VDA) is 30% larger than the previous KONA. It's also simple to adjust - you'll love the flexibility of the 40:20:40 folding rear seats. Fold down the middle segment and you can fit four pairs of skis and four passengers. And with the seats folded flat, you have a generous 1300 litres of space for weekend escapes - and big boxes of whatever you want to take with you. The Smart Power Tailgate opens automatically when the smart key is detected for 3 seconds. What's more, you can customize the lift height and opening speed.



40:20:40 folding rear seats.



Smart Power Tailgate.

Convenience highlights.



Column mounted shift-by-wire.

Everything you need right at your fingertips. The elegant rotary type shifter is located on the steering column. Operation is quick, intuitive and precise. It has been moved from the centre console to behind the steering wheel, which allows more storage in the open console area.



Open centre console with rotational cupholders.

The open centre console features an integrated arm rest and plenty of flexible storage spaces. The clever rotational cupholders can be retracted when not in use, giving you the flexibility to neatly store other items. Simply push the button to rotate them in or out.



Wireless charger pad.

Quick and easy - there's a high-speed wireless charger pad in the centre console. There's also a 12V power outlet and two USB-C ports (one with data support) for fast charging and universal compatibility.



Rear seat comfort.

Rear seat passengers will love the comfort and convenience of rear seat heating and air-conditioning vents. And for fast and flexible charging, two USB-C ports are located under the rear seat vents for easy access.

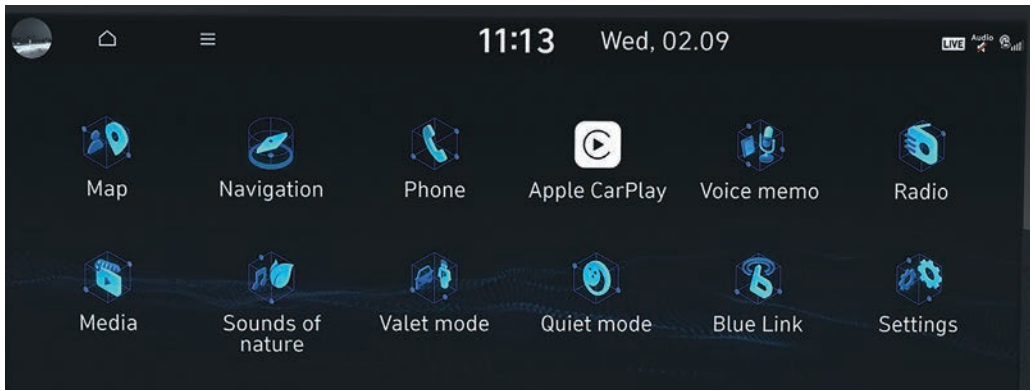




Next level smart tech for intuitive connectivity.

The KONA takes connectivity to the next level with innovative smart tech for an immersive digital experience. It all comes together in Hyundai's new generation infotainment system called Connected Car Navigation Cockpit (ccNC) - an advanced configuration of screens and hardware powered by high-speed processors and a state-of-the-art computing system. Enjoy advanced graphics, intuitive usability and perfect unity among the screens in the elegantly curved panoramic display with its dual 12.3" infotainment touch screen and 12.3" digital cluster. The futuristic configuration combines physical buttons with touch elements that give you control over multiple features and functionalities without having to take your hands off the steering wheel. Apple CarPlay™ and Android Auto™ are on board as well, so you can plug in your smartphone and mirror your apps, music, and phone layout up onto the big screen.

Apple CarPlay™ is a registered trademark of Apple Inc. Android Auto™ is a registered trademark of Google Inc.



Use your smartphone to lock, unlock and start the KONA.

Now you can leave your car key at home. For more convenience, the KONA can be locked, unlocked and started via smart phones or smart watches*. We are proud to launch Hyundai Digital Key 2 Touch in the KONA as a further component of our innovative Bluelink Connected Car Services. You can also easily share Hyundai Digital Key 2 Touch with three additional smartphones - so your family can enjoy access to the vehicle after saving it in their phone's wallet. (Apple, Samsung, Google) The system utilizes near-field communication (NFC), which assures a high level of security.

* The Hyundai Digital Key 2 Touch feature requires a compatible mobile device, Bluelink app installation and an active subscription. Features, app and specifications are subject to change. For more details, see the Owner's manual and the Bluelink terms of use. Smartphone and screen are shown for illustration purposes only.





Connected Car Services.



Bluelink®.

The KONA is equipped with the latest upgrade of Bluelink Connected Car Services - delivering seamless connectivity with online voice recognition and a wide range of features to make your drive more convenient and enjoyable. Bluelink keeps you connected with your vehicle before, during, and after your drive via smartphone app or touchscreen display to check the vehicle status and other services. On top of the many clever features that you can control with the Bluelink app, a free three-year subscription to Hyundai's LIVE Services is also included with the navigation system. Take advantage of real-time data, such as traffic information, real-time parking updates, local petrol station information, and Connected Routing, our online navigation system. Visit our website to discover the whole suite of Bluelink services designed to make driving safer, easier, and more fun.

Over The Air software updates.

Benefit from continuous updates and new features via Over The Air vehicle software updates. You get the latest enhancements as soon as they are available - without having to download and install them manually or having to visit a dealership to get them. You also receive future Bluelink map & infotainment software updates automatically Over The Air.



Scan here to explore the entire range of Bluelink services on our website.



Discover unlimited driving possibilities.

Petrol engines



Engine

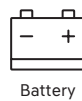
1.0-litre T-GDI 120 PS petrol engine can be combined with a 6-speed manual transmission or a 7-speed Dual Clutch Transmission. Front-wheel drive.

1.6-litre T-GDI 198 PS petrol engine can be combined with a 6-speed manual transmission or a 7-speed Dual Clutch Transmission. Front-wheel drive or on-demand all-wheel drive.

48V Mild Hybrid



Engine



Battery

48-volt mild hybrid technology is optional on the 1.0-litre T-GDI petrol engine with 120 PS and a 6-speed Intelligent Manual Transmission.

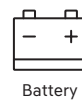
Hybrid



Engine



E-Motor



Battery

1.6-litre GDI petrol engine and 32 kW electric motor with a total combined output of 141 PS, powered by a 1.32 kWh lithium-ion polymer battery and paired with a 6-speed Dual Clutch Transmission.

Developed to reduce emissions without compromising on being fun to drive, the KONA offers the widest range of powertrains in the segment. Choose from two petrol engines, a petrol 48-volt mild hybrid, and a full hybrid. There is, of course, also an all-electric version: the KONA Electric, which is featured in a separate brochure.

KONA Hybrid.



Taking excellent fuel efficiency to the next level, the KONA Hybrid is equipped with a petrol engine and electric motor: a full-parallel hybrid drive system. They work together supported by a 1.32 kWh lithium-ion polymer battery to deliver excellent fuel economy and cut down on emissions. Depending on the driving situation, the hybrid drive system switches seamlessly between the petrol engine and electric motor - sometimes utilizing both at the same time. And as part of the regenerative braking system, the electric motor also helps slow the car, charging the battery so you don't have to.

Adjustable drive modes.

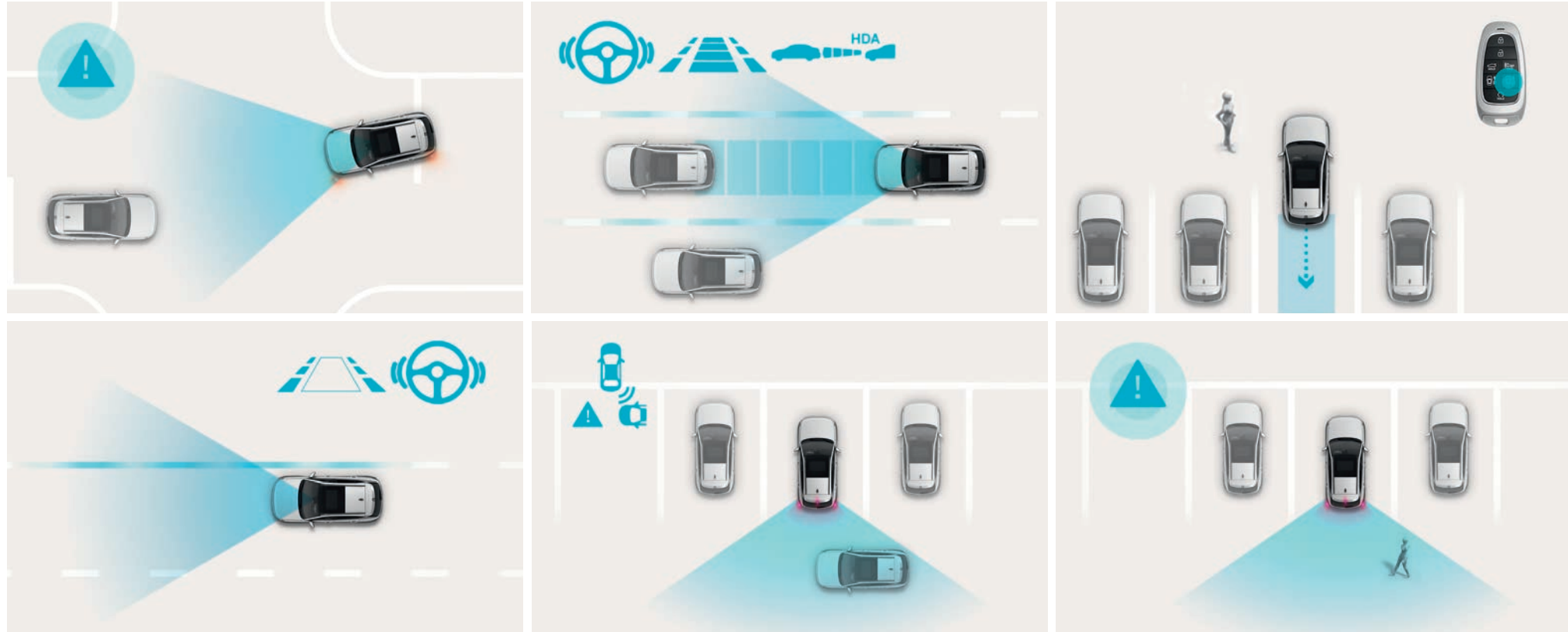


Change the drive mode at a push of a button to suit your mood - and the driving conditions. Choose from Eco, Normal and Sport to alter the driving style of your KONA in an instant. What's more, the AWD variant offers various terrain modes like Sand and Snow.

Hyundai SmartSense.

For added peace of mind, the KONA has been equipped with the latest Hyundai Smart Sense - our cutting-edge Advanced Driver Assistance Systems. The KONA Hybrid is equipped with Highway Driving Assist - a combination of Lane Following Assist and Navigation Based Smart Cruise Control - it utilises sensors and map data to ensure safe operation as well as to automatically adjust speed. It also features Blind-spot View Monitor (BVM), which allows you to see the rearward left- and right-hand side views in the digital cluster. The cameras are activated by the turn indicator during lane changes.





Forward Collision-Avoidance Assist with Junction Turning (FCA-JT).
Sensing the road with radar and a camera, the system automatically brakes when it detects sudden braking by the car ahead, or pedestrians and bikes on the road. During cross intersection turning, it brakes if there is a risk of collision with an oncoming vehicle.

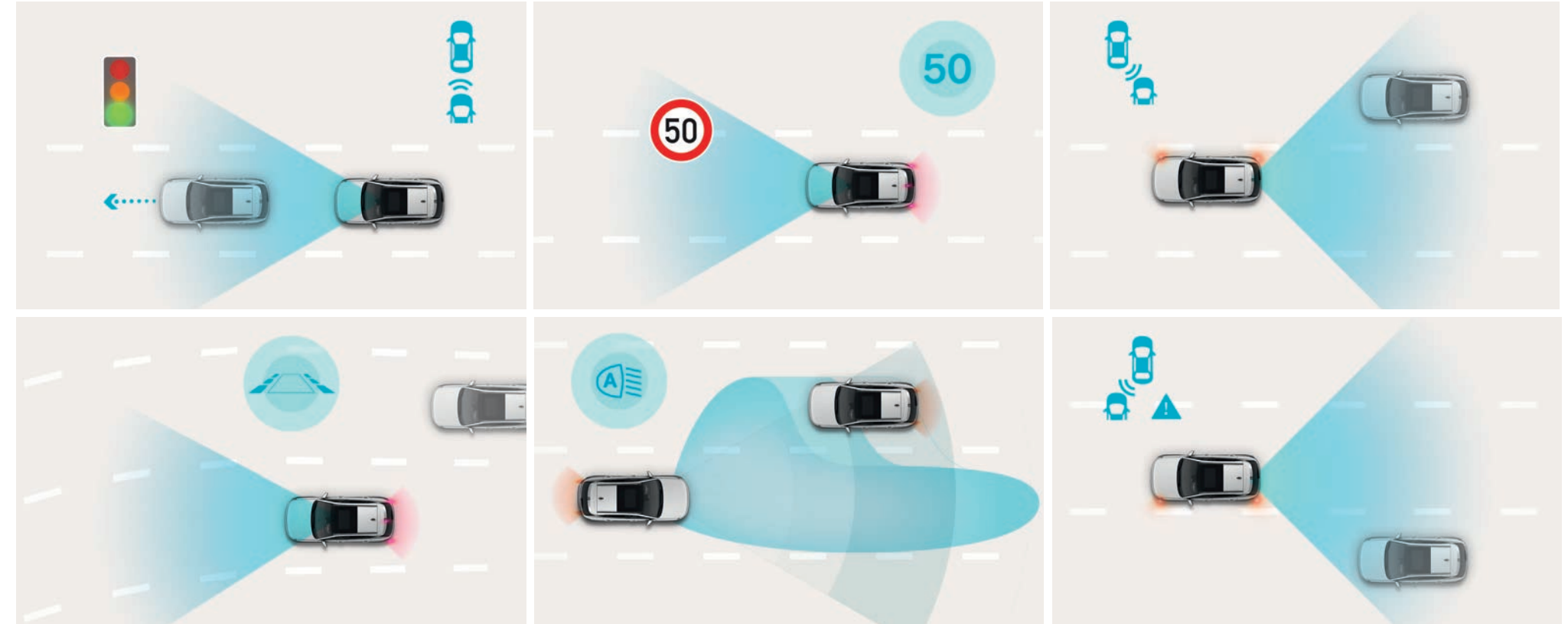
Lane Keeping Assist (LKA).
Uses the front camera to monitor the lines of the road. In case of an unintended lane departure, it will warn you and can apply counter steering torque to guide the car back to the lane.

Highway Driving Assist (HDA).
KONA Hybrid features Highway Driving Assist 1.5, which utilises sensors and map data to ensure autonomous driving that keeps you centred in your lane and traveling at a safe distance behind the car ahead by automatically adjusting your speed.

Rear Cross-Traffic Collision-Avoidance Assist (RCCA).
Perfect for parking lots. When reversing out of areas with low visibility, the system not only warns you if vehicles approach from the side - it also applies the brakes automatically.

Remote Smart Parking Assist (RSPA).
Enjoy easy parking in tight spots with RSPA - You can move KONA Hybrid forward and backward using the Smart Key buttons to control it - with you standing outside of the SUV.

Reverse Parking Collision-Avoidance Assist Reverse (PCA-R).
When reversing, if an obstacle is detected via the rear-view camera or rear ultrasonic sensors, PCA will display a warning and, if necessary, apply the brakes.



Leading Vehicle Departure Alert (LVDA).
This clever feature for city driving alerts the driver when the vehicle in front departs from an idle state, like at a stoplight or in a traffic jam.

Navigation-based Smart Cruise Control (NSCC).
Utilises the state-of-the-art navigation system to anticipate upcoming curves or straights on highways and automatically adjusts speed for safer driving. Also, if activated, the set speed also changes automatically whenever the posted speed limit changes.

Intelligent Speed Limit Assist (ISLA).
This semi-autonomous driving features recognises road speed signs and adjusts vehicle speed to match the speed limit (when activated).

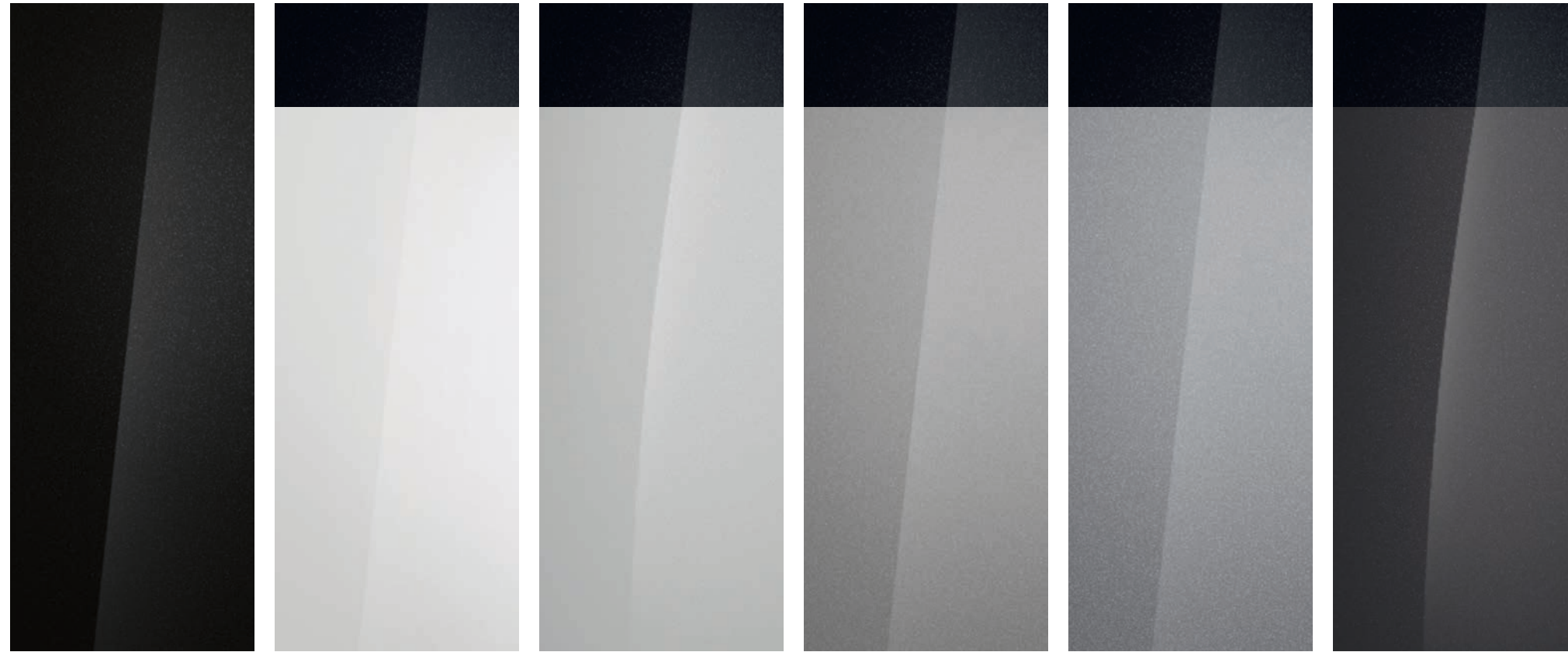
High Beam Assist (HBA).
Less stress and maximum visibility. Detects oncoming vehicles and vehicles in the same lane ahead and switches to low-beam as appropriate, reactivating the high-beam when no vehicles are detected.

Blind Spot Collision-Avoidance Assist (BCA).
Delivering more safety in dense traffic, BCA will warn you and automatically apply the left or right brakes and control the steering when a vehicle is detected in your blind spot and you begin to change lanes.

Blind-Spot Collision Warning (BCW).
Using radar in the lower rear bumper, the system warns you of traffic in the blind spot. Should you set the turn indicator in such a situation, it will sound an acoustic alert and brake to prevent collision.

Express yourself.

The KONA lets you mix and match its design to fit your personal style. Choose from a wide range of exterior colours to complement the eye-catching silhouette. On top of that, the option of a two-tone roof in Abyss Black allows you to further customize colour combinations to express to create a car perfectly matched to your taste.



Abyss Black (Pearl)

ICE / HEV / N Line

Atlas White (Solid)

ICE / HEV / N Line

Optional two-tone roof available in Abyss Black

Serenity White (Pearl)

ICE / N Line

Optional two-tone roof available in Abyss Black

Cyber Grey (Metallic)

ICE / HEV / N Line

Optional two-tone roof available in Abyss Black

Shimmering Silver (Metallic)

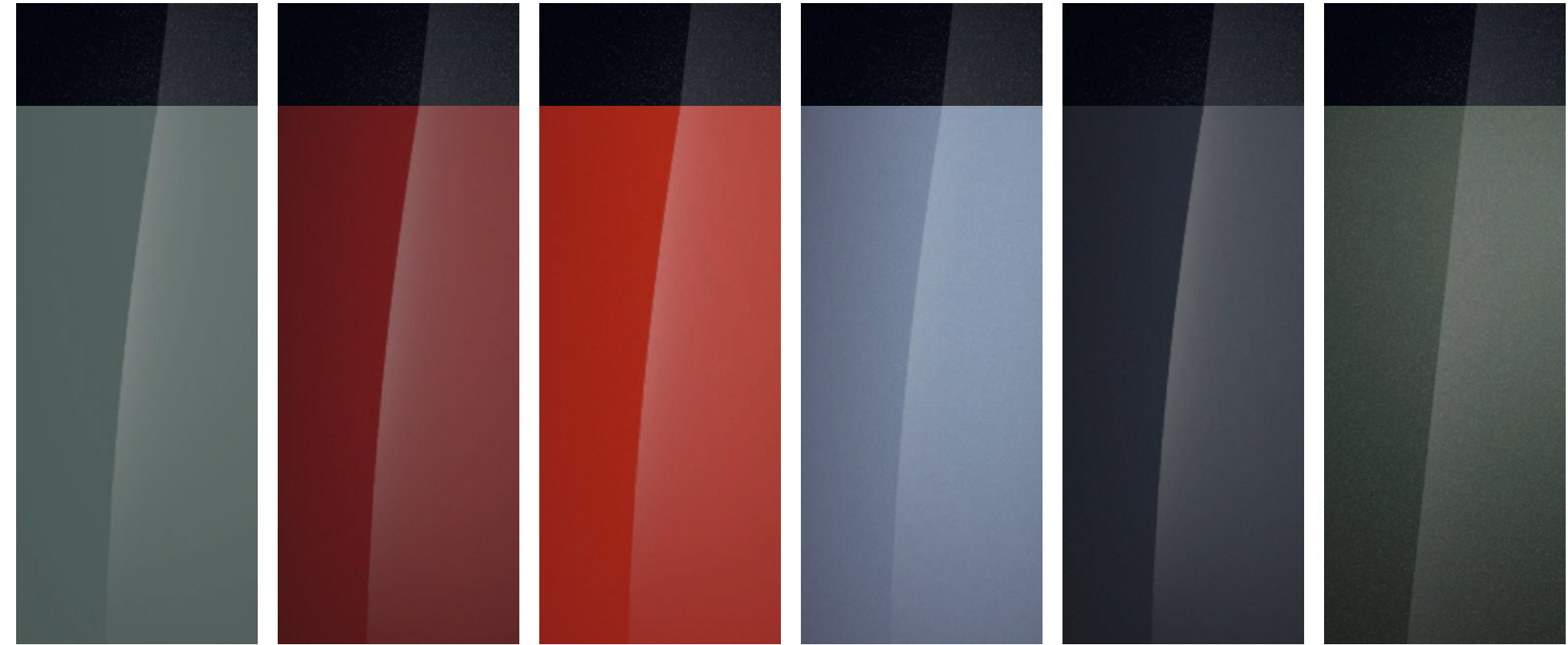
ICE / N Line

Optional two-tone roof available in Abyss Black

Ecotronic Grey (Pearl)

ICE / HEV / N Line

Optional two-tone roof available in Abyss Black



Mirage Green (Solid)

ICE / HEV / N Line

Optional two-tone roof available in Abyss Black

Ultimate Red (Metallic)

ICE / HEV / N Line

Optional two-tone roof available in Abyss Black

Soultronic Orange (Pearl)

HEV

Optional two-tone roof available in Abyss Black

Meta Blue (Pearl)

ICE / HEV / N Line

Optional two-tone roof available in Abyss Black

Denim Blue (Pearl)

ICE / HEV / N Line

Optional two-tone roof available in Abyss Black

Amazon Grey (Metallic)

ICE

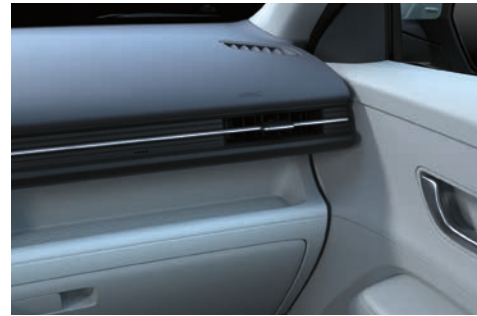
Optional two-tone roof available in Abyss Black

Interior colours.

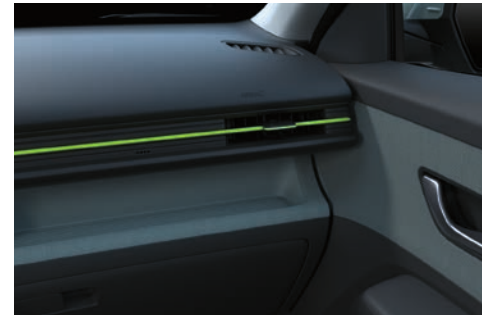
Featuring new colours and materials, the KONA is available with the following interior colour schemes: Black Mono, Grey Two-Tone, Sage Green & Black, Fossil Gray Mono (Eco Pack). The Eco Pack makes innovative use of environmentally friendly materials like 100% recycled PET in the floor carpets and eco-processed leather and suede. There are also Colour Packs available: Black & Sage Green + Lime, Black + Orange, and Black + Blue.



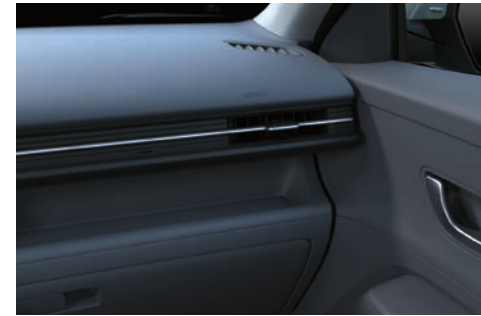
Black Mono



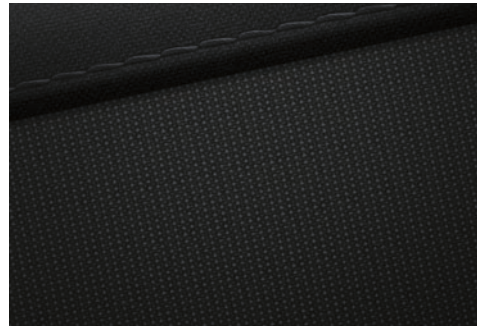
Grey Two-Tone - Light Grey / Dark Grey



Sage Green & Black



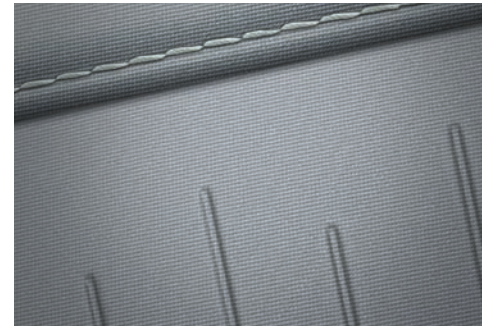
Fossil Grey Mono (Eco Pack)



Seats: Cloth Black GL, Cloth Black GLS



Seats: Cloth & Pure Leather Black, Pure Leather Black



Seats: Cloth Light Grey, Pure Leather Light Grey



Seats: Pure Leather Sage Green, Pure Leather Sage Green with Green accents

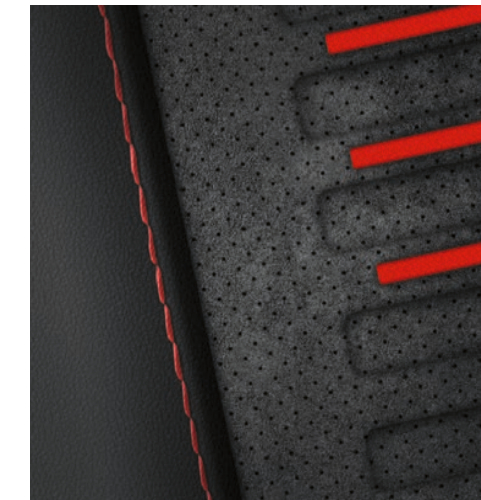


N Line Interior colours.

Upgrade your comfort zone. Choose from two N Line exclusive interior options for more motor sport flair: cloth seats or an Alcantara & Leather version featuring the luxurious grip and feel of Eco Alcantara® with 65% recycled PET.



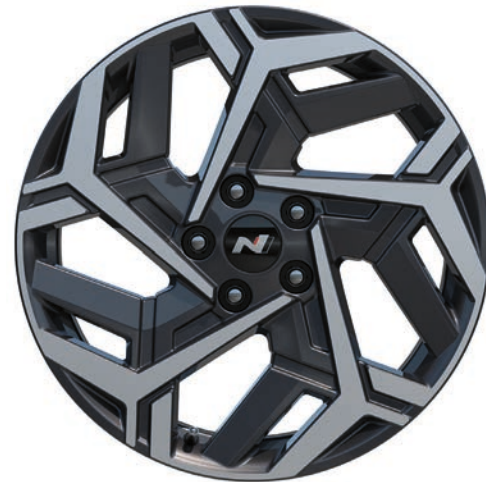
Featuring the N logo and red contrast stitching, the Eco Alcantara® & Leather N Line seats keep you in control and comfortable.



N Line seats are available in cloth or Eco Alcantara® & Leather.

Wheels.

Choose from a stylish range of alloy wheels including new 16", 17" and 18" wheel designs.
The KONA N Line comes with 18" two-tone grey metallic alloy wheels, which are exclusive to the trim.



18" alloy wheel (N Line only)



18" alloy wheel



17" alloy wheel (ICE only)



16" alloy wheel

Specifications and dimensions.

Type	Gasoline					Hybrid
Engine	1.0 T-GDI 6-speed MT	1.0 T-GDI 7-speed DCT	1.0 T-GDI 48V 6-speed iMT	1.6 T-GDI 6-speed MT (Euro 6d)	1.6 T-GDI 7-speed DCT 2/4WD	1.6 GDI HEV 6-speed DCT
Engine Type	In-line 3 Cylinder	In-line 3 Cylinder	In-line 3 Cylinder	In-line 4 Cylinder	In-line 4 Cylinder	In-line 4 Cylinder
Displacement (cc)	998	998	998	1,598	1,598	1,580
Max. Power (kW (PS) / rpm)	88.3 (120) / 6,000	88.3 (120) / 6,000	88.3 (120) / 6,000	145.6 (198) / 6,000	145.6 (198) / 6,000	77.2 (105) / 5,700
Max. Torque (Nm (kgf-m) / rpm)	200 (20.4) / 2,000-3,500	200 (20.4) / 2,000-3,500	200 (20.4) / 2,000-3,500	265 (27.0) / 1,600-4,500	265 (27.0) / 1,600-4,500	144.2 (14.7) / 4,000
Transmission type	6-MT	7-DCT	6-MT	6-MT	7-DCT	6-DCT
Drive type	2WD	2WD	2WD	2WD	2WD / 4WD	2WD
Full Hybrid System						
Electric Motor type	--	--	--	--	--	PMSM
Electric Motor Max. Power (kW / PS)	--	--	--	--	--	32 / 43.5
Electric Motor Max. Torque (Nm / lb-ft)	--	--	--	--	--	170 / 125
Hybrid System combined output (PS / Nm)	--	--	--	--	--	141 / 256
Performance						
Max. Speed (km/h)	180	180	180	210	210	161 (16") / 155 (18")
0 to 100 km/h acceleration (sec)	11.8	11.7	11.7	8.7	7.8 (2WD) / 8.1 (4WD)	10.9 (16") / 11.2 (18")
Suspension						
Front	McPherson Strut	McPherson Strut	McPherson Strut	McPherson Strut	McPherson Strut	McPherson Strut
Rear	CTBA	CTBA	CTBA	CTBA	CTBA / Multi-Link (4WD)	Multi-Link
Wheel and Tire type						
16-inch steel wheels / 16-inch alloy wheels	205/65R16	205/65R16	205/65R16	--	--	205/65R16
17-inch alloy wheels	215/60R17	215/60R17	215/60R17	215/60R17	215/60R17	--
18-inch alloy wheels	215/55R18	215/55R18	215/55R18	215/55R18	215/55R18	215/55R18
Weight						
Roof Rack Load / w/ w/o Sunroof (kg)	100	100	100	100	100	100

Abbreviations: **iMT** → Intelligent Manual Transmission **DCT** → Dual Clutch Transmission **MT** → Manual Transmission **PMSM** → Permanent Magnet Synchronous Motor



Overall Width 1,825
Wheel Tread 1,591

Overall Height

1,580
with Roof Rails
1,585



Overall Length 4,350
N Line 4,385
Wheel Base 2,660



Wheel Tread 1,600

Unit : mm

All figures refer to the KONA equipped with an 18" wheel.

Get to grips with the new EU tyre labelling.

From May 1, 2021, the EU Regulation (EU) 2020/740 will come into effect. The new labels provide a quick, clear overview of a tyre's performance, with more detailed information available online. Visit (Hyundai URL) for more information. The KONA is available with different types of tyres. You'll find detailed information for the various tyres available below.

Product Information Sheets, Delegated Regulation (EU) 2020/740
You can also access the full official EU legislation here: <https://eur-lex.europa.eu/eli/reg/2020/740/oj>



Supplier name or trademark	NEXENTIRE
Commercial name or trade designation	N'FERA Primus
Tyre type identifier / Tyre class	10263 / C1
Tyre size designation	205/65R16
Load-capacity index	95
Speed category symbol	H 210 km/h
Fuel efficiency class	A
Wet grip class	A
External rolling noise class	B
External rolling noise value	71 dB
Severe snow tyre	No
Ice tyre	No
Date of start of production (Week / Year)	30/21
Date of end of production (Week / Year)	
Load version	SL
Additional information	--

Supplier name or trademark	KUMHO PS71
Commercial name or trade designation	PS71
Tyre type identifier / Tyre class	2304353 / C1
Tyre size designation	205/65 R16
Load-capacity index	95
Speed category symbol	H 210 km/h
Fuel efficiency class	A
Wet grip class	C
External rolling noise class	B
External rolling noise value	71 dB
Severe snow tyre	No
Ice tyre	No
Date of start of production (Week / Year)	11 / 22
Date of end of production (Week / Year)	--
Load version	SL
Additional information	--

Supplier name or trademark	NEXENTIRE
Commercial name or trade designation	N'FERA Primus
Tyre type identifier / Tyre class	10028 / C1
Tyre size designation	215/60R17
Load-capacity index	96
Speed category symbol	H 210 km/h
Fuel efficiency class	A
Wet grip class	A
External rolling noise class	B
External rolling noise value	71 dB
Severe snow tyre	No
Ice tyre	No
Date of start of production (Week / Year)	30 / 21
Date of end of production (Week / Year)	--
Load version	SL
Additional information	--

Supplier name or trademark	KUMHO PS71
Commercial name or trade designation	PS71
Tyre type identifier / Tyre class	2304363 / C1
Tyre size designation	215/60 R17
Load-capacity index	96
Speed category symbol	H 210 km/h
Fuel efficiency class	A
Wet grip class	B
External rolling noise class	B
External rolling noise value	71 dB
Severe snow tyre	No
Ice tyre	No
Date of start of production (Week / Year)	11 / 22
Date of end of production (Week / Year)	--
Load version	SL
Additional information	--

Supplier name or trademark	NEXENTIRE
Commercial name or trade designation	N'FERA Primus
Tyre type identifier / Tyre class	11966 / C1
Tyre size designation	215/55R18
Load-capacity index	95
Speed category symbol	V 240 km/h
Fuel efficiency class	B
Wet grip class	B
External rolling noise class	B
External rolling noise value	71 dB
Severe snow tyre	No
Ice tyre	No
Date of start of production (Week / Year)	30 / 21
Date of end of production (Week / Year)	--
Load version	SL
Additional information	--

Supplier name or trademark	KUMHO PS71
Commercial name or trade designation	PS71
Tyre type identifier / Tyre class	2304373 / C1
Tyre size designation	215/55 R18
Load-capacity index	95
Speed category symbol	V 240 km/h
Fuel efficiency class	B
Wet grip class	A
External rolling noise class	B
External rolling noise value	71 dB
Severe snow tyre	No
Ice tyre	No
Date of start of production (Week / Year)	11 / 22
Date of end of production (Week / Year)	--
Load version	SL
Additional information	--



Get ready to live unlimited.

Bigger and bolder, the KONA has evolved - growing wider and longer to provide maximised living space - without losing any of its iconic design identity. A dynamic combination of style and performance featuring the finest of cutting-edge technology, this compact SUV deserves a closer look. You can explore the possibilities online - or just stop by your local Hyundai dealership for a test drive and experience the difference yourself.

Discover more at Hyundai.com/eu

Dealer stamp



The Hyundai 5-Year Unlimited Mileage Warranty applies only to Hyundai vehicles that have been originally sold by an authorized Hyundai dealer to an end-customer, as set out in the terms and conditions of the warranty booklet. 8 years or 160,000 km warranty on vehicle battery unit. Local terms and conditions apply. Contact your official Hyundai dealer for further information.

All the information contained in this brochure is provisional and subject to change without notice and is intended only as preliminary notification. Possible variations in the representation of vehicle colours are due to the limitations of printing technology. The products shown correspond to the offer and the range of equipment for European markets. The vehicles shown in this brochure may be equipped with additional equipment at extra cost, and not all model versions are included in this brochure. Hyundai Motor Europe reserves the right to make changes to technical specifications and equipment content without notice. Please consult your Hyundai dealer for exact details.